

SMD Flat Common Mode Chokes

SQS1515B SERIES

FEATURES:

- Compact size, low DCR, low leakage due to square core
- High permeability material, High impedance at low frequency
- High attenuation to noise, due to low stray capacitance
- Flammability tested to UL94V-0
- High withstanding voltage between winding
- High insulation resistance
- Low cost, high consistency with automated production
- RoHS, REACH compliance

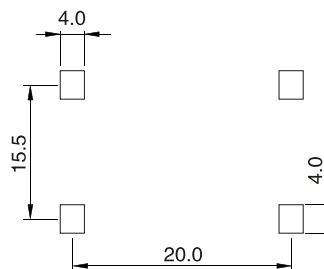
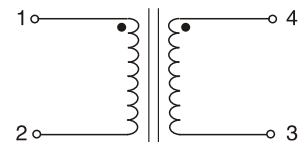
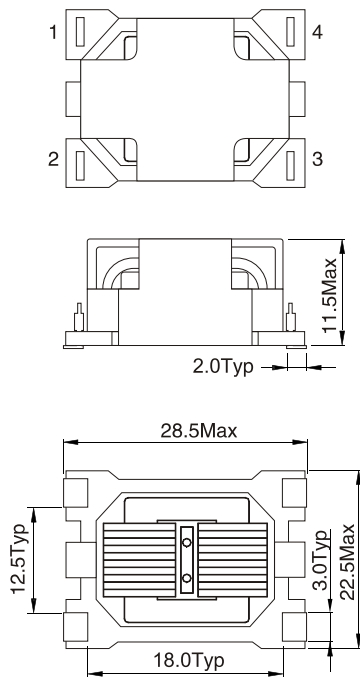
APPLICATION:

- Solutions for use in a wide array of power supply circuits
- High density switching mode power supply devices
- Ideal for use in consumer electronics and industrial applications: LCD TV, Battery chargers, Power Adapter, Home appliances
- Space saving for existing Common Mode Chokes

ELECTRICAL CHARACTERISTICS:

Part Number	Inductance Min. (mH).	DCR Max. (mΩ).	Rated current (A)
SQS1515B-203-1.5A	20.0	250	1.5-2.0
SQS1515B-153-1.8A	15.0	200	1.8-2.2
SQS1515B-153-2.0A	15.0	180	2.0-2.8
SQS1515B-103-2.0A	10.0	150	2.0-2.5
SQS1515B-103-2.5A	10.0	80	2.5-3.0
SQS1515B-502-2.5A	5.0	80	2.5-3.5
SQS1515B-302-3.5A	3.0	70	3.5-4.5
SQS1515B-202-5.0A	2.0	60	5.0-5.0

TECHNICAL INFORMATION & PHYSICAL CHARACTERISTICS:



LAND PATTERNS

Note:

- Test frequency1.0KHz, 0.25V
- Rated voltage80Vac~280Vac
- Insulation voltage1.5KVac, 60Sec
- Operating temperature-25°C to +125°C
Including coil temperature rise
- Storage temperature-25°C to +100°C
- Hi-Pot..... 2400Vac/60Sec
- Insulation resistance.....100MΩ Min@500Vdc
- Power range60W-120W